

第36回東海地区年代別ボウリング選手権大会



Oil Pattern Distance: 43 Feet **Reverse Brush Drop:** 43 Feet **Oil Per Board:** 45 uL
Forward Oil Total: 17.55 mL **Reverse Oil Total:** 13.41 mL **Volume Oil Total:** 30.96 mL
Forward Boards Crossed: 390 Boards **Reverse Boards Crossed:** 298 Boards **Total Boards Crossed:** 688 Boards

	Start	Stop	Loads	Speed	Crossed	Start	End	Feet	T.Oil
1	2L	2R	2	14	74	0.0	1.9	1.9	3330
2	5L	5R	3	14	93	1.9	7.8	5.9	4185
3	8L	8R	3	18	75	7.8	15.4	7.6	3375
4	10L	10R	3	18	63	15.4	23.0	7.6	2835
5	12L	12R	2	18	34	23.0	28.1	5.1	1530
6	12L	12R	3	22	51	28.1	37.4	9.3	2295
7	2L	2R	0	30	0	37.4	43.0	5.6	0

Navigation: Forward Reverse More

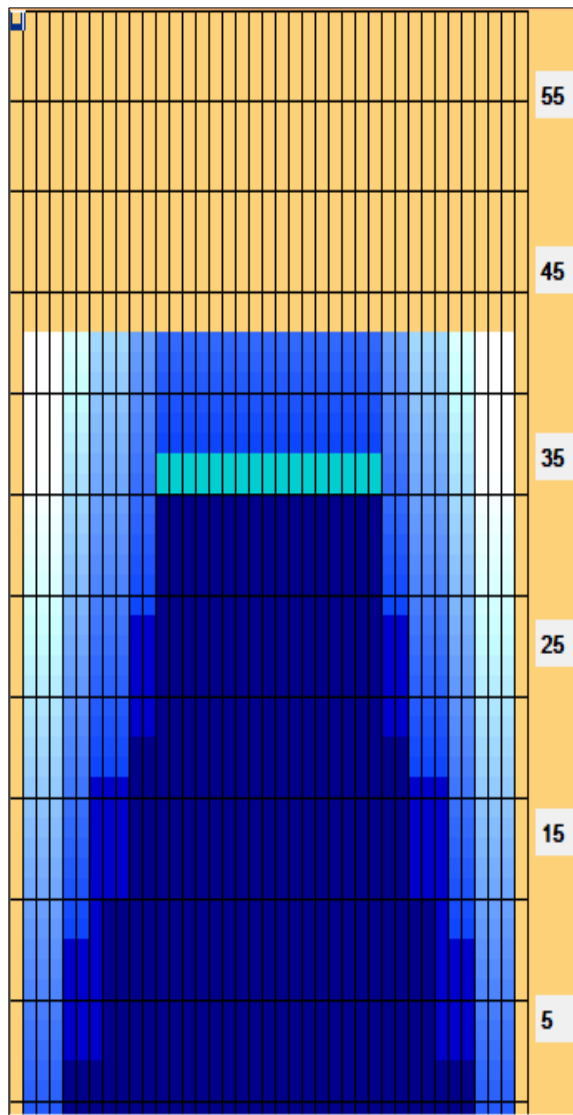
	Start	Stop	Loads	Speed	Crossed	Start	End	Feet	T.Oil
1	2L	2R	0	30	0	43.0	35.0	-8.0	0
2	12L	12R	2	22	34	35.0	28.8	-6.2	1530
3	10L	10R	3	18	63	28.8	21.2	-7.6	2835
4	7L	7R	4	14	108	21.2	13.3	-7.9	4860
5	5L	5R	3	14	93	13.3	7.4	-5.9	4185
6	2L	2R	0	10	0	7.4	0.0	-7.4	0

Navigation: Forward Reverse More

Conditioner:
Type In or Select One

TransferType:
Type In or Select One

- Forward
- Reverse
- Combined
- Buff



Item	3L-7L:18L-18R	8L-12L:18L-18R	13L-17L:18L-18R	18L-18R:17R-13R	18L-18R:12R-8R	18L-18R:7R-3R
Description	Outside Track:Middle	Middle Track:Middle	Inside Track:Middle	Middle: Inside Track	Middle:Middle Track	Middle:Outside Track
Track Zone Ratio	4.38	1.4	1	1	1.4	4.38

