

第72回愛知県小中高競技会(中高生の部)

第38回全日本年齢別選手権大会・愛知県予選会(19歳以下の部)



Oil Pattern Distance:	41 Feet	Reverse Brush Drop:	41 Feet	Oil Per Board:	50 uL
Forward Oil Total:	23.85 mL	Reverse Oil Total:	14.05 mL	Volume Oil Total:	37.9 mL
Forward Boards Crossed:	477 Boards	Reverse Boards Crossed:	281 Boards	Total Boards Crossed:	758 Boards

	Start	Stop	Loads	Speed	Crossed	Start	End	Feet	T.Oil
1	2L	2R	4	10	148	0.0	4.2	4.2	7400
2	5L	5R	2	14	62	4.2	8.1	3.9	3100
3	7L	7R	3	14	81	8.1	14.0	5.9	4050
4	9L	9R	3	18	69	14.0	21.6	7.6	3450
5	11L	11R	3	18	57	21.6	29.2	7.6	2850
6	13L	13R	4	18	60	29.2	39.4	10.2	3000
7	2L	2R	0	22	0	39.4	41.0	1.6	0

Navigation: Forward Reverse More

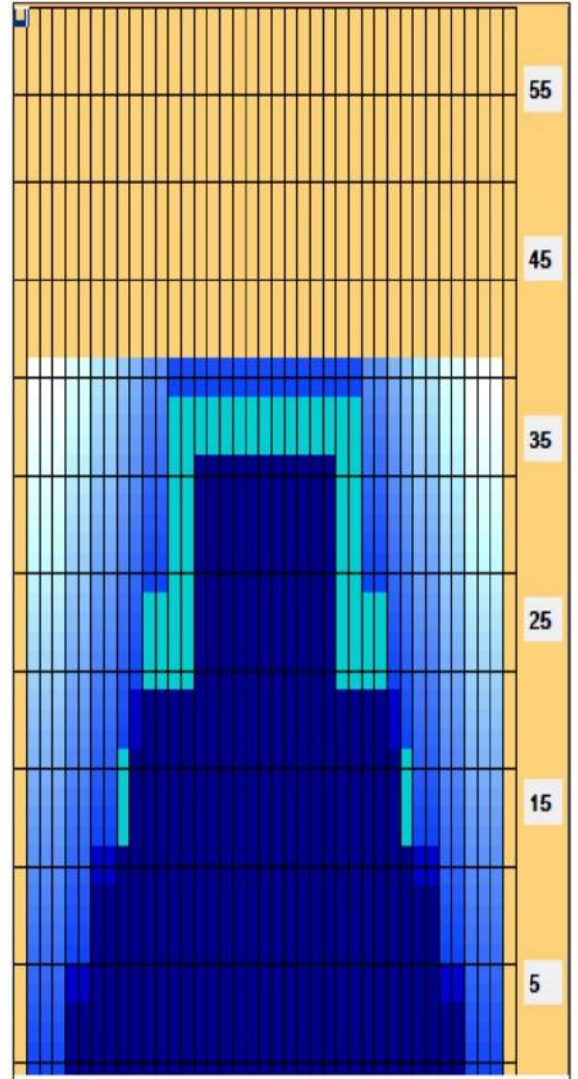
	Start	Stop	Loads	Speed	Crossed	Start	End	Feet	T.Oil
1	2L	2R	0	30	0	41.0	36.0	-5.0	0
2	15L	15R	4	22	44	36.0	23.6	-12.4	2200
3	10L	10R	3	18	63	23.6	16.0	-7.6	3150
4	7L	7R	3	14	81	16.0	10.1	-5.9	4050
5	5L	5R	3	14	93	10.1	4.2	-5.9	4650
6	2L	2R	0	14	0	4.2	0.0	-4.2	0

Navigation: Forward Reverse More

Conditioner:
Type In or Select One

TransferType:
Type In or Select One

- Forward
- Reverse
- Combined
- Buff



Item	3L-7L:18L-18R	8L-12L:18L-18R	13L-17L:18L-18R	18L-18R:17R-13R	18L-18R:12R-8R	18L-18R:7R-3R
Description	Outside Track:Middle	Middle Track:Middle	Inside Track:Middle	Middle: Inside Track	Middle:Middle Track	Middle:Outside Track
Track Zone Ratio	3.9	1.57	1.05	1.05	1.57	3.9

