

第45回全日本クラブ対抗選手権



Oil Pattern Distance:	42 Feet	Reverse Brush Drop:	42 Feet	Oil Per Board:	50 uL
Forward Oil Total:	17.9 mL	Reverse Oil Total:	13.75 mL	Volume Oil Total:	31.65 mL
Forward Boards Crossed:	358 Boards	Reverse Boards Crossed:	275 Boards	Total Boards Crossed:	633 Boards

	Start	Stop	Loads	Speed	Crossed	Start	End	Feet	T.Oil
1	2L	2R	3	18	111	0.0	5.1	5.1	5550
2	2L	5R	1	18	34	5.1	7.6	2.5	1700
3	4L	6R	1	14	31	7.6	9.5	1.9	1550
4	7L	7R	1	10	27	9.5	10.9	1.4	1350
5	8L	8R	1	14	25	10.9	12.8	1.9	1250
6	9L	9R	2	14	46	12.8	16.7	3.9	2300
7	10L	10R	4	10	84	16.7	22.3	5.6	4200
8	2L	2R	0	22	0	22.3	42.0	19.7	0

Navigation: Forward Reverse More

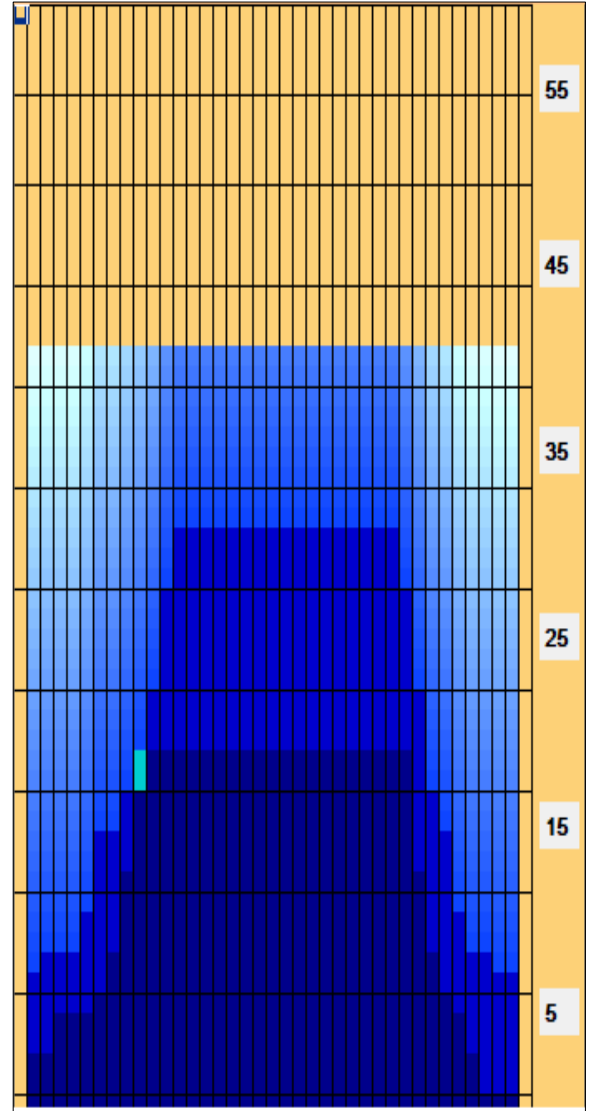
	Start	Stop	Loads	Speed	Crossed	Start	End	Feet	T.Oil
1	2L	2R	0	26	0	42.0	33.0	-9.0	0
2	13L	11R	1	22	17	33.0	29.9	-3.1	850
3	12L	10R	2	18	38	29.9	24.8	-5.1	1900
4	11L	9R	2	18	42	24.8	19.7	-5.1	2100
5	9L	8R	1	14	24	19.7	17.8	-1.9	1200
6	7L	7R	2	14	54	17.8	13.9	-3.9	2700
7	6L	6R	1	14	29	13.9	12.0	-1.9	1450
8	3L	4R	1	10	34	12.0	10.6	-1.4	1700
9	2L	2R	1	10	37	10.6	9.2	-1.4	1850
10	2L	2R	0	10	0	9.2	0.0	-9.2	0

Navigation: Forward Reverse More

Conditioner:
Type In or Select One

TransferType:
Type In or Select One

- Forward
- Reverse
- Combined
- Buff



Item	3L-7L:18L-18R	8L-12L:18L-18R	13L-17L:18L-18R	18L-18R:17R-13R	18L-18R:12R-8R	18L-18R:7R-3R
Description	Outside Track:Middle	Middle Track:Middle	Inside Track:Middle	Middle: Inside Track	Middle:Middle Track	Middle:Outside Track
Track Zone Ratio	3.08	1.33	1	1	1.19	3.53

