

第46回全日本クラブ対抗選手権大会



Oil Pattern Distance: 45 Feet **Reverse Brush Drop:** 45 Feet **Oil Per Board:** 50 uL
Forward Oil Total: 20.75 mL **Reverse Oil Total:** 14.7 mL **Volume Oil Total:** 35.45 mL
Forward Boards Crossed: 415 Boards **Reverse Boards Crossed:** 294 Boards **Total Boards Crossed:** 709 Boards

	Start	Stop	Loads	Speed	Crossed	Start	End	Feet	T.Oil
1	4L	4R	2	14	66	0.0	1.9	1.9	3300
2	5L	5R	3	14	93	1.9	7.8	5.9	4650
3	7L	7R	4	14	108	7.8	15.7	7.9	5400
4	10L	10R	3	14	63	15.7	21.6	5.9	3150
5	12L	12R	3	18	51	21.6	29.2	7.6	2550
6	12L	12R	2	18	34	29.2	34.3	5.1	1700
7	2L	2R	0	18	0	34.3	45.0	10.7	0

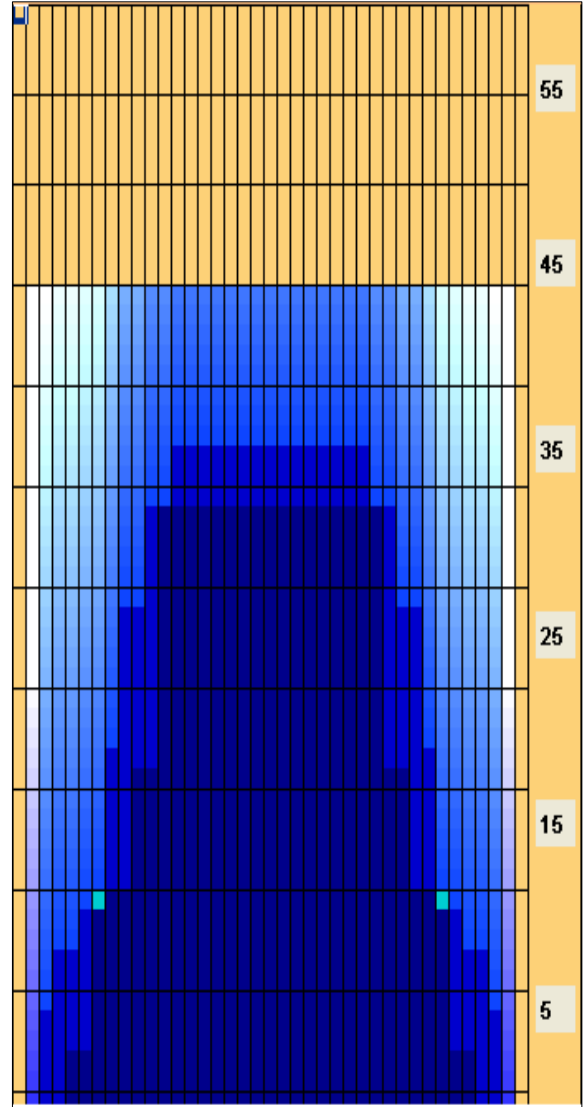
Navigation: Forward Reverse More

	Start	Stop	Loads	Speed	Crossed	Start	End	Feet	T.Oil
1	2L	2R	0	22	0	45.0	37.0	-8.0	0
2	13L	13R	1	18	15	37.0	34.5	-2.5	750
3	11L	11R	2	18	38	34.5	29.4	-5.1	1900
4	9L	9R	3	18	69	29.4	21.8	-7.6	3450
5	8L	8R	3	18	75	21.8	14.2	-7.6	3750
6	6L	6R	1	18	29	14.2	11.7	-2.5	1450
7	4L	4R	1	18	33	11.7	9.2	-2.5	1650
8	3L	3R	1	18	35	9.2	6.7	-2.5	1750
9	2L	2R	0	18	0	6.7	0.0	-6.7	0

Navigation: Forward Reverse More

Conditioner:
 Type In or Select
 One
 TransferType:
 Type In or Select
 One

- Forward
- Reverse
- Combined
- Buff



Item	3L-7L:18L-18R	8L-12L:18L-18R	13L-17L:18L-18R	18L-18R:17R-13R	18L-18R:12R-8R	18L-18R:7R-3R
Description	Outside Track:Middle	Middle Track:Middle	Inside Track:Middle	Middle: Inside Track	Middle:Middle Track	Middle:Outside Track
Track Zone Ratio	4.53	1.38	1	1	1.38	4.53

