

# 2019年度愛知県知事杯ボウリング選手権大会



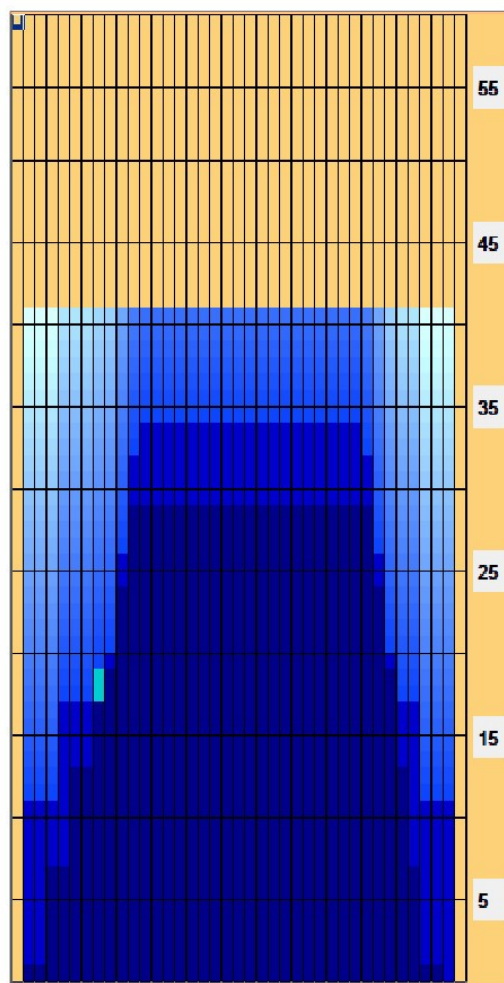
<b>Oil Pattern Distance:</b>	<b>41 Feet</b>	<b>Reverse Brush Drop:</b>	<b>41 Feet</b>	<b>Oil Per Board:</b>	<b>50 uL</b>
<b>Forward Oil Total:</b>	<b>21.05 mL</b>	<b>Reverse Oil Total:</b>	<b>17.35 mL</b>	<b>Volume Oil Total:</b>	<b>38.4 mL</b>
<b>Forward Boards Crossed:</b>	<b>421 Boards</b>	<b>Reverse Boards Crossed:</b>	<b>347 Boards</b>	<b>Total Boards Crossed:</b>	<b>768 Boards</b>

	Start	Stop	Loads	Speed	Crossed	Start	End	Feet	T.Oil
1	2L	3R	2	14	72	0.0	1.9	1.9	3600
2	4L	5R	3	14	96	1.9	7.8	5.9	4800
3	6L	6R	3	14	87	7.8	13.7	5.9	4350
4	8L	7R	3	14	78	13.7	19.6	5.9	3900
5	10L	8R	2	18	46	19.6	24.7	5.1	2300
6	11L	9R	2	18	42	24.7	29.8	5.1	2100
7	2L	2R	0	26	0	29.8	41.0	11.2	0

Conditioner:  
Type In or Select One

TransferType:  
Type In or Select One

- Forward
- Reverse
- Combined
- Buff



	Start	Stop	Loads	Speed	Crossed	Start	End	Feet	T.Oil
1	2L	2R	0	26	0	41.0	34.0	-7.0	0
2	12L	10R	1	18	19	34.0	31.5	-2.5	950
3	11L	9R	2	18	42	31.5	26.4	-5.1	2100
4	10L	8R	3	14	69	26.4	20.5	-5.9	3450
5	9L	7R	2	14	50	20.5	16.6	-3.9	2500
6	5L	5R	3	14	93	16.6	10.7	-5.9	4650
7	2L	2R	2	14	74	10.7	6.8	-3.9	3700
8	2L	2R	0	14	0	6.8	0.0	-6.8	0

Item	3L-7L:18L-18R	8L-12L:18L-18R	13L-17L:18L-18R	18L-18R:17R-13R	18L-18R:12R-8R	18L-18R:7R-3R
Description	Outside Track:Middle	Middle Track:Middle	Inside Track:Middle	Middle: Inside Track	Middle:Middle Track	Middle:Outside Track
Track Zone Ratio	2.98	1.25	1	1	1.04	2.86

