

# 第36回東海地区3人チームボウリング選手権大会



**Oil Pattern Distance:** 42 Feet      **Reverse Brush Drop:** 38 Feet      **Oil Per Board:** 45 uL  
**Forward Oil Total:** 15.03 mL      **Reverse Oil Total:** 10.575 mL      **Volume Oil Total:** 25.605 mL  
**Forward Boards Crossed:** 334 Boards      **Reverse Boards Crossed:** 235 Boards      **Total Boards Crossed:** 569 Boards

	Start	Stop	Loads	Speed	Crossed	Start	End	Feet	T.Oil
1	3L	3R	1	14	35	0.0	0.0	0.0	1575
2	5L	5R	2	14	62	0.0	3.9	3.9	2790
3	6L	6R	2	14	58	3.9	7.8	3.9	2610
4	7L	7R	2	18	54	7.8	12.9	5.1	2430
5	10L	10R	2	18	42	12.9	18.0	5.1	1890
6	11L	11R	2	22	38	18.0	24.2	6.2	1710
7	12L	12R	2	22	34	24.2	30.4	6.2	1530
8	15L	15R	1	22	11	30.4	33.5	3.1	495
9	2L	2R	0	26	0	33.5	42.0	8.5	0

Navigation: Forward Reverse More

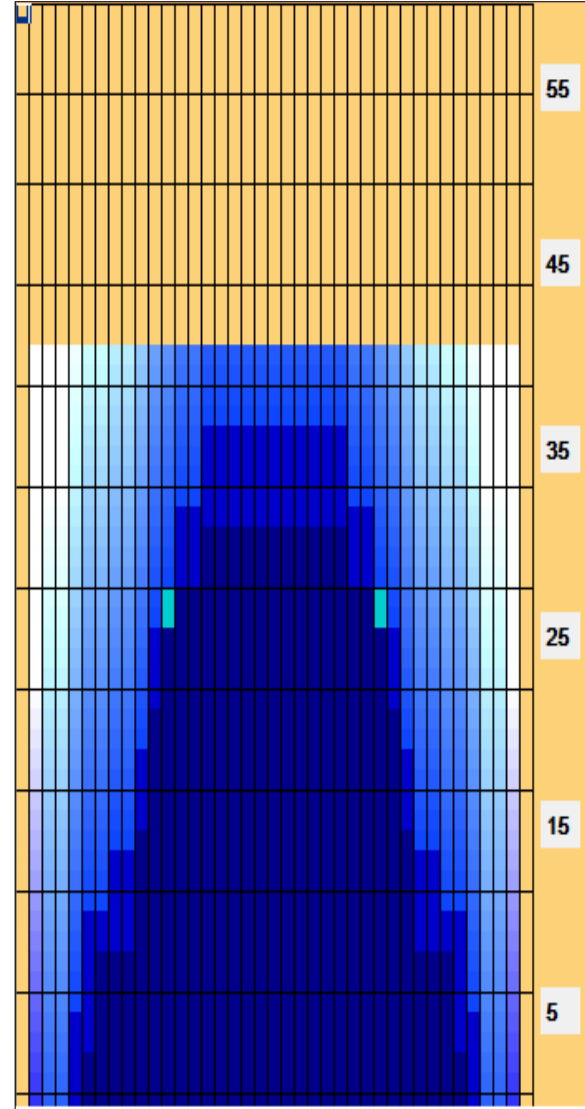
	Start	Stop	Loads	Speed	Crossed	Start	End	Feet	T.Oil
1	2L	2R	0	26	0	42.0	38.0	-4.0	0
2	15L	15R	1	26	11	38.0	34.4	-3.6	495
3	13L	13R	2	22	30	34.4	28.2	-6.2	1350
4	11L	11R	2	22	38	28.2	22.0	-6.2	1710
5	10L	10R	2	18	42	22.0	16.9	-5.1	1890
6	8L	8R	1	18	25	16.9	14.4	-2.5	1125
7	6L	6R	2	18	58	14.4	9.3	-5.1	2610
8	5L	5R	1	14	31	9.3	7.4	-1.9	1395
9	2L	2R	0	14	0	7.4	0.0	-7.4	0

Navigation: Forward Reverse More

Conditioner:  
Type In or Select One

TransferType:  
Type In or Select One

- Forward
- Reverse
- Combined
- Buff



Item	3L-7L:18L-18R	8L-12L:18L-18R	13L-17L:18L-18R	18L-18R:17R-13R	18L-18R:12R-8R	18L-18R:7R-3R
Description	Outside Track:Middle	Middle Track:Middle	Inside Track:Middle	Middle:Inside Track	Middle:Middle Track	Middle:Outside Track
Track Zone Ratio	5.21	1.62	1.03	1.03	1.62	5.21

